

HPMKTTM F.24 *Media Kit*

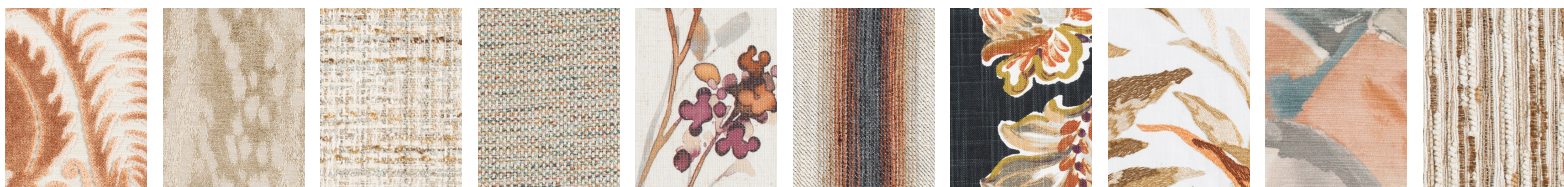


This fall, Temple Furniture + Parker Southern are excited to announce their latest introductions and parent company name, Parker Brands.

Parker Brands encompasses three North Carolina furniture manufacturers each serving niche markets. Temple Furniture, which is our 8-way hand tied sofa and accent chair division, and Parker Southern produces accent chairs, dining and beds to wholesale customers. Our newest addition, Mantle Furniture, produces quality pieces to the e-commerce world. Together, under Parker Brands, our artisans create beautiful, quality pieces for all.

Our newest designs and fabric choices this season showcases the warmth that comes with the changing of the seasons as well as design trends.

P
parker
brands



introducing
BESPOKE
the collection

an artisan collection of thoughtfully crafted fabrics
showcasing luxury, texture and movement.

The design mind approaching this market has been like no other.
Over the last several years, we have continued to change and
bring more curated and design forward items to showcase the
true artisans that make up Temple Furniture + Parker Southern.



New Templefurniture



HUXLEY

available in 23" + 25" seat depths
chair + ott
W.85 | SD.23 | H.38



AUTUMN

available in 3 widths + loveseat
chair + ott
W.90 | SD.22 | H.33



BROOKLYN

available in 23" + 25" seat depths
chair + ott
W.80 | SD.23 | H.37

new options:

RUBEN



added swivel option

ZOEY



added swivel option

LUCY



added leg option

New Parkersouthern

BELLA



new options:

now available in
17" + 19" seat heights



DRISCOLL

W.27.5 | SD.22 | H.30.5